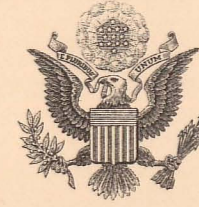


INTERNATIONAL BOUNDARY

FROM THE ST. LAWRENCE RIVER
TO THE SOURCE OF THE ST. CROIX RIVER

SHEET No. 52

SURVEYED UNDER THE DIRECTION OF
 UNITED STATES COMMISSIONER HIS BRITANNIC MAJESTY'S COMMISSIONER
 O. H. TITTMANN, 1908-1915 W. F. KING, 1908-1916
 E. C. BARNARD, 1915-1921 J. J. MCARTHUR, 1917-
 E. LESTER JONES, 1921-
 IN ACCORDANCE WITH ARTICLE III OF THE TREATY OF 1908

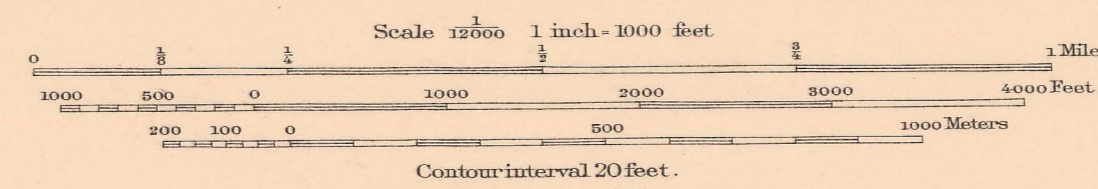
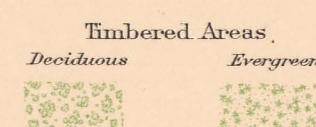


FOR THE UNITED STATES

JAMES H. VAN WAGENEN, ENGINEER TO THE COMMISSION
 SURVEYORS IN CHARGE: J. B. BAYLOR, 1909, AND
 F. H. BRUNDAGE, 1917
 CONTROL BY S. H. BLAY AND W. B. GILMORE, 1909, AND
 F. H. BRUNDAGE, 1917
 TOPOGRAPHY BY F. H. BRUNDAGE, 1909 AND 1917
 MONUMENTING BY J. B. BAYLOR, 1909, AND F. H. BRUNDAGE, 1917
 INSPECTION BY J. B. BAYLOR, 1909, AND F. H. BRUNDAGE, 1917

FOR HIS MAJESTY

J. D. CRAIG, D. L. S., ENGINEER TO THE COMMISSION
 SURVEYOR IN CHARGE: G. C. RAINBOTH, D. L. S., 1909
 CONTROL BY G. L. RAINBOTH AND W. M. DENNIS, 1909,
 AND J. L. RAINBOTH, D. L. S., 1915
 TOPOGRAPHY BY J. R. POWDER, 1909
 MONUMENTING BY G. C. RAINBOTH, D. L. S., 1909
 INSPECTION BY G. C. RAINBOTH, D. L. S., 1909



International Boundary Line ———
 Boundary Turning Points (not marked) ———
 Boundary Reference Marks:
 Iron monuments on islands, or
 concrete monuments on shore
 Bronze posts, 8 in. high, on islands, or
 bronze tablets, set in concrete, on shore

We certify that this map is one of the quadruplicate set of sixty-one (61) maps
 adopted under Article III of the Treaty between Great Britain and the United States,
 signed at Washington April 11, 1908, and that we have marked thereon the Boundary
 Line as re-established by the Commissioners designated above, in accordance with the
 provisions of the said Article.

Signed October 11, 1922.

J. J. McArthur *E. Lester Jones*
 His Britannic Majesty's Commissioner United States Commissioner

SHEET NO. 52