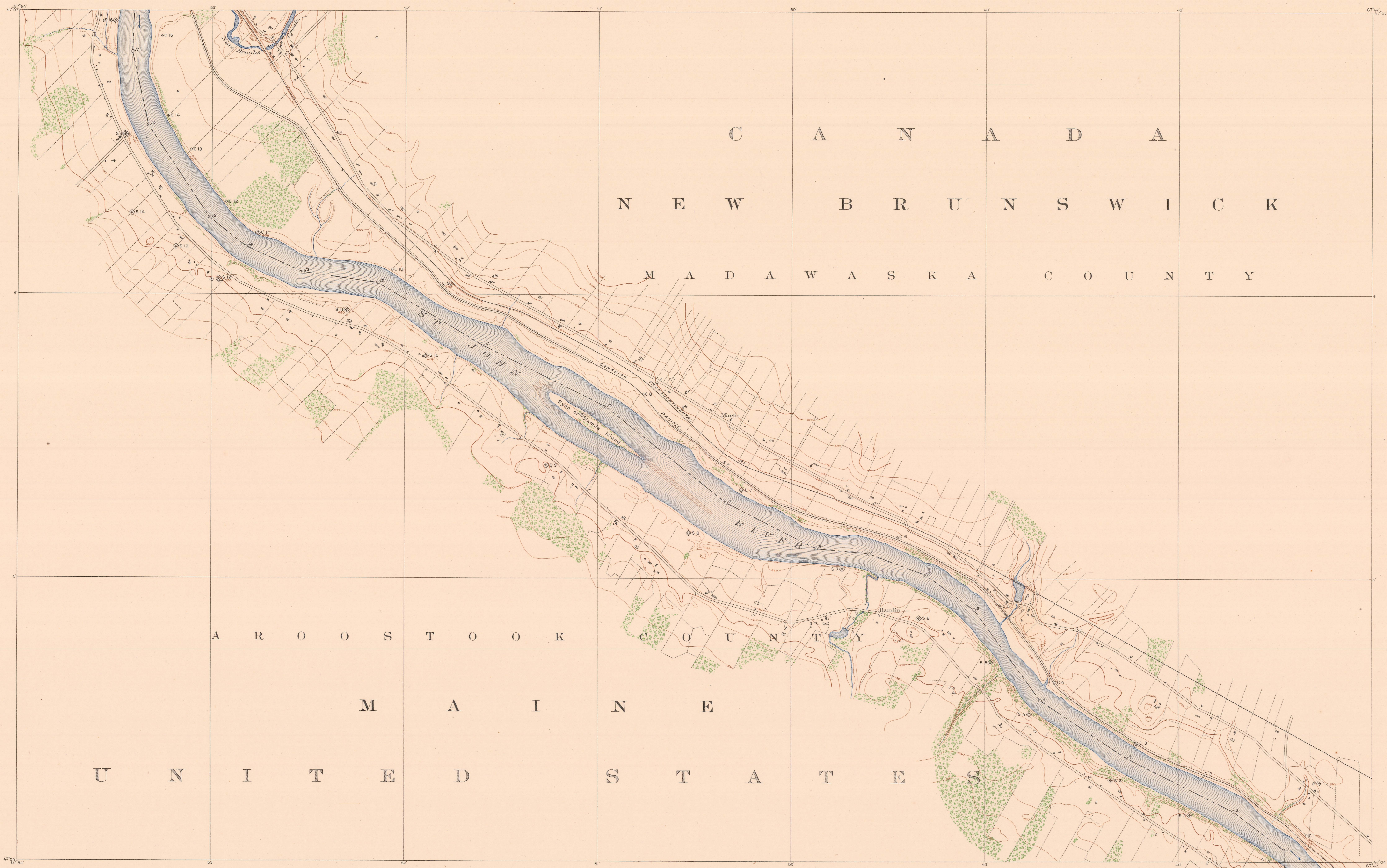
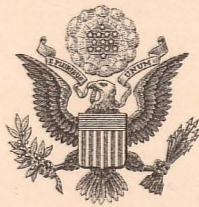


INTERNATIONAL BOUNDARY

FROM THE ST. LAWRENCE RIVER  
TO THE SOURCE OF THE ST. CROIX RIVER

SHEET No. 57

SURVEYED UNDER THE DIRECTION OF  
UNITED STATES COMMISSIONER HIS BRITANNIC MAJESTY'S COMMISSIONER  
O. H. PITTMANN, 1898-1915 W. F. KING, 1898-1916  
E. C. BARNARD, 1915-1921 J. J. McARTHUR, 1917  
E. LESTER JONES, 1921  
IN ACCORDANCE WITH ARTICLE III OF THE TREATY OF 1908.

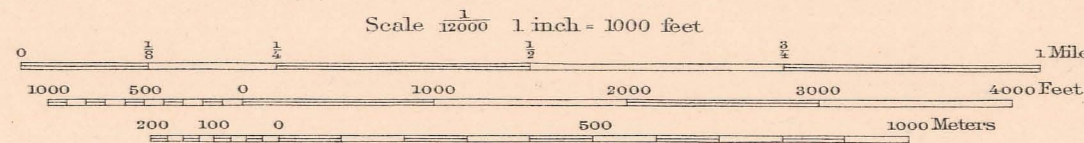


FOR HIS MAJESTY

J. D. CRAIG, D. L. S., ENGINEER TO THE COMMISSION  
SURVEYOR IN CHARGE: G. C. RAINBOTH, D. L. S., 1909  
CONTROL BY G. L. RAINBOTH, I. R. FOUNDER, AND  
W. M. DENNIS, 1909, AND J. L. RAINBOTH, D. L. S., 1916  
TOPOGRAPHY BY I. R. FOUNDER, 1909  
MONUMENTING BY G. C. RAINBOTH, D. L. S., 1909  
INSPECTION BY G. C. RAINBOTH, D. L. S., 1909

FOR THE UNITED STATES

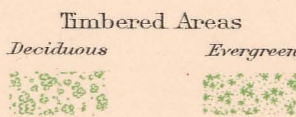
JAMES H. VAN WAGEN, ENGINEER TO THE COMMISSION  
SURVEYORS IN CHARGE: J. B. BAYLOR, 1909, AND  
F. H. BRUNDAGE, 1917  
CONTROL BY R. H. BLAIN AND W. B. GILMORE, 1909, AND  
F. H. BRUNDAGE, 1917  
TOPOGRAPHY BY F. H. BRUNDAGE, 1909 AND 1917  
MONUMENTING BY J. B. BAYLOR, 1909, AND  
F. H. BRUNDAGE, 1917  
INSPECTION BY J. B. BAYLOR, 1909, AND  
F. H. BRUNDAGE, 1917



Contour interval 20 feet.

Distances in mean sea level.

Shaded areas indicate land elevation that the elevation on this sheet are 2 feet too low.



International Boundary Line  
Boundary Turning Points (not marked)  
Boundary Monuments  
Boundary Reference Marks:  
Iron monuments on islands or  
concrete monuments on shore  
Bronze posts, 8 in. high, on islands or  
bronze tablets, set in concrete, on shore

We certify that this map is one of the quadruplicate set of sixty-one (61) maps  
adopted under Article III of the Treaty between Great Britain and the United States,  
signed at Washington April 11, 1908, and that we have marked thereon the Boundary  
Line as re-established by the Commissioners designated above, in accordance with the  
provisions of the said Article.

Signed January 24, 1923.

J. J. McArthur  
His Britannic Majesty's Commissioner

E. Lester Jones  
United States Commissioner